

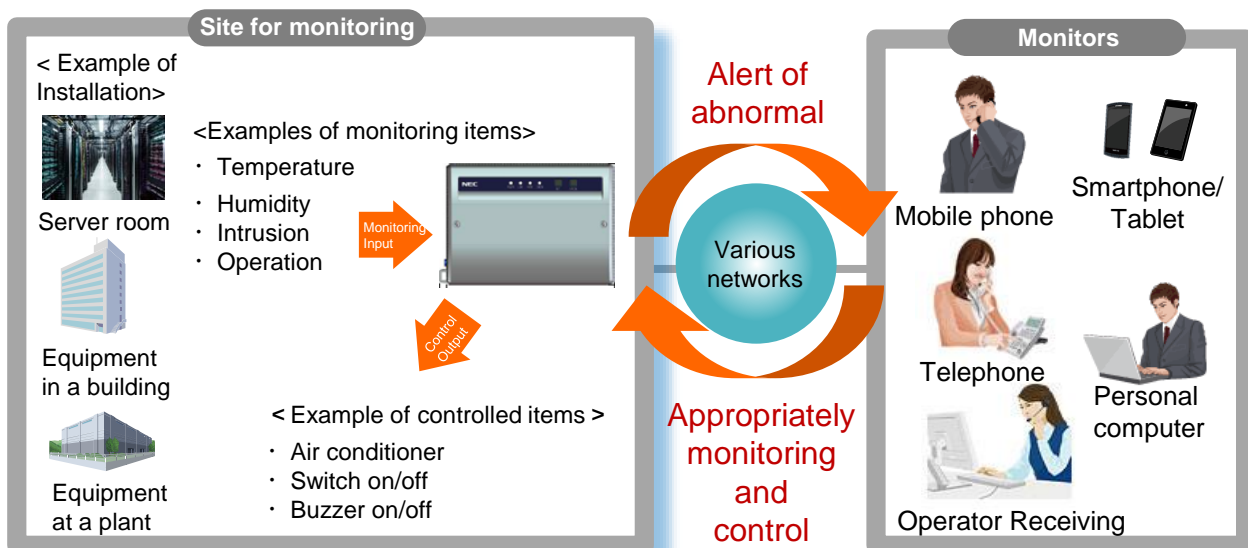
# Remote Monitoring System CS500



(10" size)

Compact one box remote monitoring system which includes battery back up, 8 inputs and 2 outputs with valuable features, such as Web server and mail client.

## Overview



## Features

### ● Compact one box

Separate AC adaptor and all of interfaces includes battery back up consist with one box.



### ● Output control

External facilities are able to be controlled by the digital outputs from remotely depends on the input status, and interlocking operation with input conditions are possible.

### ● Universally accepted and scalable external input

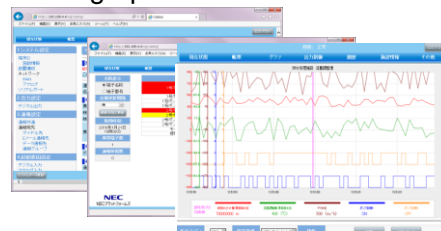
Non voltage digital input, 0-20/4-20mA current input and 0-5V/1-5V voltage input are selectable.

### ● Support Text to speech

When alert occasion, text will change to the voice message. Messages are available in English or Chinese (Simplified or Traditional Chinese). Thereby, alert in an emergency is possible.

### ● Web functions

It can also be used as a Web monitoring device as there are built-in Web server functions. By using a regular browser it is possible to browse various data, such as a alert history, operation history, as well as settings. It is also possible to browse the daily, monthly and annual reports and display trend graphs.

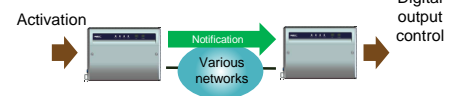


## Features

● **Supporting various communication infrastructures**  
Supporting major communication infrastructures such as general analog line and LAN. A suitable communication infrastructure can be selected according to the environment of the site, where it is to be installed. Multiple communication infrastructures can be used in combinations.

● **Variety of Alert patterns**  
Any alert method can be chosen from Voice, email, Data depending on the requirement. Alert site can be set for each monitoring input. Alert methods can also be used in combination.

● **Linking functions**  
This UNIT is added as an alert method. It is possible to control the digital output of separate it in remote location by activating the corresponding it at the site. Owing to IP communication, it can be used by various networks infrastructures.



## Specifications

### [Control Unit]

Items		Main specifications
Network Interface		Analog / LAN
Digital/ Analog Interface	Input	8ch *This is the maximum number if analog input is used as digital input • Input format Non-voltage contact input • Input method Selection of event / estimated pulse / estimated Time for each terminal • Minimum detection time Event : 300ms/pulse: 10ms/Operation:1s
		4ch (non-isolated) *Can be change to Digital or Analog input for each terminal • Input format Selection of voltage/current input for each terminal • Input level Voltage: DC 0-5V/1-5V Current: DC 0-20mA/4-20mA • Resolution 12bit
	Output	Digital 2ch • Output format Transistor output • Output format Selection of continuous/one-shot for each terminal • Can be returned and connected to digital input
User interface	LED	POWER / LINE / MODE / CHECK Internal body cover: SD / LAN
	Button	Front panel of the body: SET / CANCEL Internal body cover: POWER_SW
	Speakers etc.	Built-in speaker
Alert function	Alert method	Voice / email / data / Another notification unit
	Alert pattern	Maximum receivers Voice : 16 connects / Email : 32 IDs. Data / AU to AU : 8 contacts Digital input Alert (event / estimated pulse / estimated time) / analog input Alert (threshold) / regular Alert (specified time / specified interval / daily, monthly and annual report etc.) / power outage Alert / mode switching Alert/low battery Alert etc. *The functions are restricted depending on the Alert
line Interface etc.	General telephone line	1 port • There are external telephone connection port • Connector: RJ11 x 2 ( LINE / TEL ) • Compatible modem : V34, V92
	LAN (1port)	• 100BASE-T • Auto MDI / MDI-X • Connector : RJ45
Operating environment		Temperature:0°C to 40°C Humidity: 20% to 85% (non-condensing)

Items		Main specifications
Remote control	Control method	Browser / data
	Control details	Current status check / daily, monthly and annual report check / trend graph / output control (digital) / various histories check / system data setting etc. *Functions are restricted depending on the controlling system
Power supply	Operating power	DC12V *Supplied from a dedicated AC Adapter.
	Power failure	NiMH battery pack (8 "A" batteries Type)
	Power consumption	6VA (max)
External dimensions		210 mm (W) x 150mm (H) x 62 mm (D) *not include AC adapter and DC cable guard.
Weight		Approximately 0.93kg *including standard battery for power outage.
Mounting method		Direct mounting or DIN rail mounting
Power outage guarantee		Three Alerts, after one hour of waiting after power outage by the standard battery
Accumulation function	Memory	SD memory card (1Slot, 2GB memory initial implemented)
	Accumulated data item	Data such as Alert history / operation history / control history / daily, monthly and annual report etc. Total 33,000 items

### [AC Adapter]

Items		Main specifications
Input power	Operating power	AC100-240V 0.65A 50Hz/60Hz
Output power		Rate: DC12V 2.5A
class of equipment		class II
Operating environment		Temperature:0°C to 40°C Humidity: 20% to 85% (non-condensing)
The shape of the inlet		IEC STD C8 *The shape of the adapted outlet of AC cord is C7
DC output type		EIAJ Type 4
External dimensions		113.5mm(W) x 54mm(H) x 36.3mm(D) *Length of DC Cable : 1m
Weight		Approximately 0.25kg

NEC Platforms, Limited  
IoT Business Division  
2-3 Kanda Tsukasamachi Chiyoda-ku Tokyo 101-8532 Japan  
TEL:+81-3-5282-5881  
■Home page <http://www.necplatforms.co.jp/enkakusp/>  
■Email: [info@enkaku.jp](mailto:info@enkaku.jp)

Please leave your comments or contact details here.